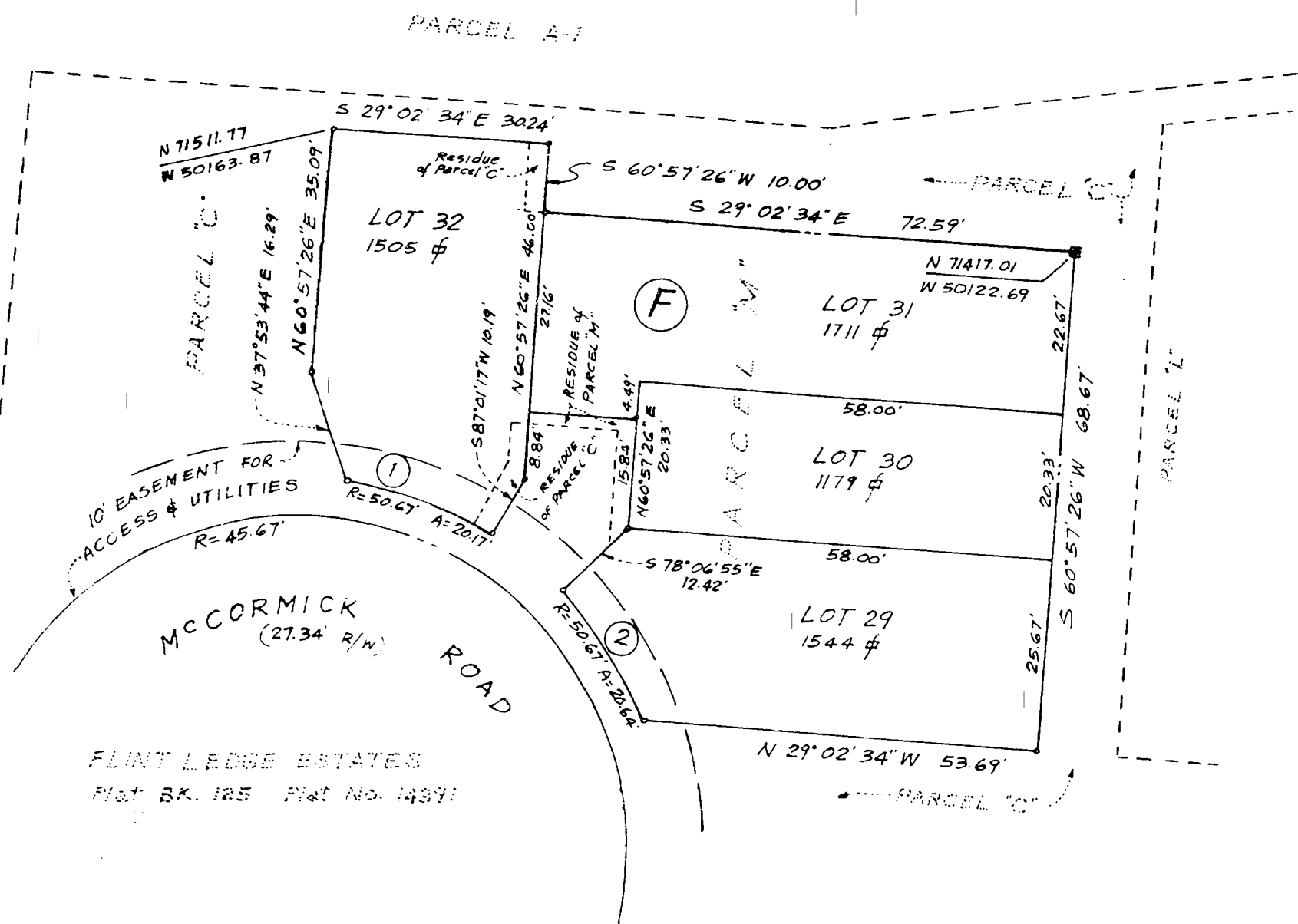
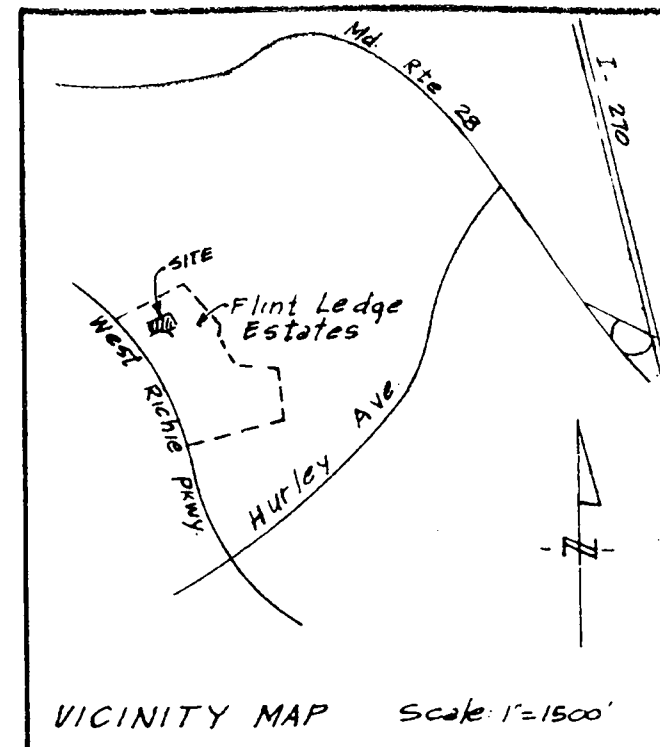
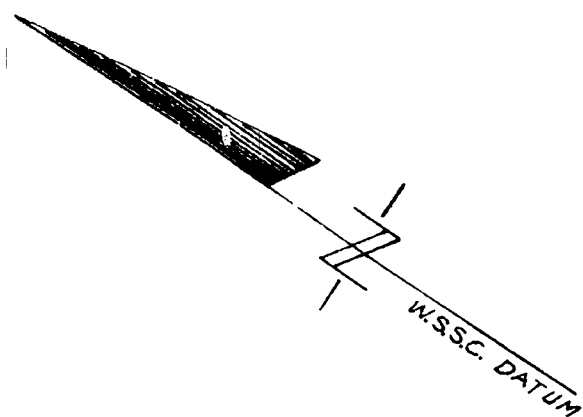


CURVE DATA						
No.	RADIUS	DELTA	ARC	TAN.	CHORD	CHORD BEARING
1	50.67	22° 48' 20"	20.17	10.22	20.03	N 14° 22' 54" W
2	50.67	23° 20' 14"	20.64	10.46	20.49	N 23° 33' 12" E

PLAT NO.



OWNER'S DEDICATION

We, DENNIS ROURKE CORPORATION and FLINT LEDGE ESTATES COMMUNITY ASSOCIATION INC, owners of the property shown and described hereon hereby adopt this plan of subdivision establish the minimum building restriction lines and dedicate the streets to public use. Easements for access, utilities, installation, maintenance of public sidewalk, streets, street lights, fire hydrants and operation of Public Water mains and sanitary sewer lines has been previously granted to the utility companies and to the City of Rockville in a plat of subdivision and recorded among the Land Records of Montgomery County, Maryland in Plat Book 125 at Plat No. 14391.

There are no suits of action, leases, liens or trusts on the property included in this plan of subdivision other than those whose parties in interest there to have below indicated their assent.

DENNIS ROURKE CORPORATION

4/26/84
Date

Dennis Rourke
Dennis Rourke, President

Christy E. Rourke
Attest: Christy E. Rourke, Secretary

We assent to this plan of subdivision:

<i>William M. Conby</i>	5-10-84
William M. Conby (Trustee)	Date
<i>Robert L. Burchett</i>	5-10-84
Robert L. Burchett (Trustee)	Date
<i>Dennis J. Rourke</i>	4/26/84
Chairman, Flint Ledge Estates Community Assoc. Inc.	Date

SURVEYORS CERTIFICATE

I hereby certify that the plan shown hereon is correct; that it is a resubdivision of part of Parcels "M" and "C" as shown on a subdivision plat entitled Plat one FLINT LEDGE ESTATES and recorded among the Land Records of Montgomery County, Maryland in Plat Book 125 at Plat No. 14391; that it is also a part of all the lands conveyed to DENNIS ROURKE CORPORATION and FLINT LEDGE ESTATES COMMUNITY ASSOCIATION by HENRY H. CARTER et al by deed dated July 22, 1983 and recorded among the aforementioned Land Records in Liber 6148 at Folio 650 and Liber 6149 at Folio 20 respectively.

Iron pipes marked thus: o and monuments marked thus: □ are in place as shown.

The total area included in this plan of subdivision is 5939 square feet or 0.1363 Acres.

3-5-84
Date

John A. Kephart
John A. Kephart, P.L.S.
Md. Reg. No. 10105

FILED

JUN 7 1985

Approved:
City of Rockville Planning Commission

Date APRIL 10, 1984
Without Commitment to installation of
Sewer Water or Streets

Paul Barnes *Larry N. Blick*
Chairman City Manager

Recorded _____
Plat Book _____
Plat No. _____

I. P. D. S. Ltd.
The Interprofessional Planning &
Design Studio
802 Sligo Ave.
Silver Spring, Md. 20910
585-5676

LOTS 29 THRU 32 BLOCK F
A RESUBDIVISION of PARTS
of PARCELS "M" and "C"

FLINT LEDGE ESTATES

City of Rockville
4th Election District
Montgomery County, Maryland
Scale: 1"=20' Mar. 2, 1983

